



USER GUIDE | CLOUD COMMUNICATIONS



**MASERGY**

## **GDS IP Door Phones In-Wall Mounting Kit**

Quick Installation Guide

March 2019

## IN-WALL MOUNTING KIT

### OVERVIEW

The In-Wall Mounting Kit is available for use with the GDS3705 and GDS3710. This mounting kit allows the GDS door phones to be flush mounted within a wall rather than on the surface of the wall. It supports solid wall, stud and drywall (hollow wall) installation. When installing any GDS series device or the In-Wall Mounting kit, please follow local building and electrical code. The device is suggested to be installed with the bottom of the device 50-55 inches above the ground.

Please refer to the Masergy and Grandstream websites for more updated Online Documents like:

**Masergy QIG:**      [GDS3705 Quick Installation Guide](#)      [GDS3710 Quick Installation Guide](#)

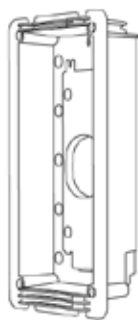
**User Manual:**      [GDS3705 User Manual](#)      [GDS3710 User Manual](#)

**FAQ:**      [Grandstream Facility Access Systems](#)



## IN-WALL MOUNTING KIT

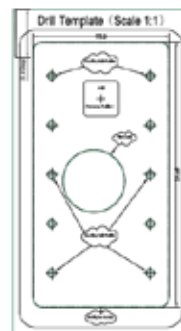
### PACKAGE CONTENTS



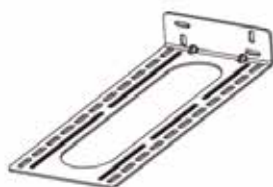
1 x Plastic Box



1 x Cover Plate



1 x Drill Template



1 x Metal Frame  
(For Stud Mount)



1 x Quick Reference  
Guide



1 x Anti-Tamper  
Hex Key



PA3.5\*35mm  
6 x Anchor & Screw  
Set (Mount the Plastic  
Box into Solid Wall)



PA3\*10mm  
6 x Screws  
(Fix the Bracket  
into Plastic Box)



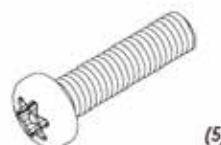
PA3\*12mm  
6 x Screws  
(Fix Plastic Box  
on Meta Frame)



M3  
6 x Nuts  
(Fix Plastic Box on  
the Meta Frame)



M3  
6 x Nuts  
(Fix Plastic Box on  
the Meta Frame)



PM3\*12mm  
6 x Anti-Tamper Screws





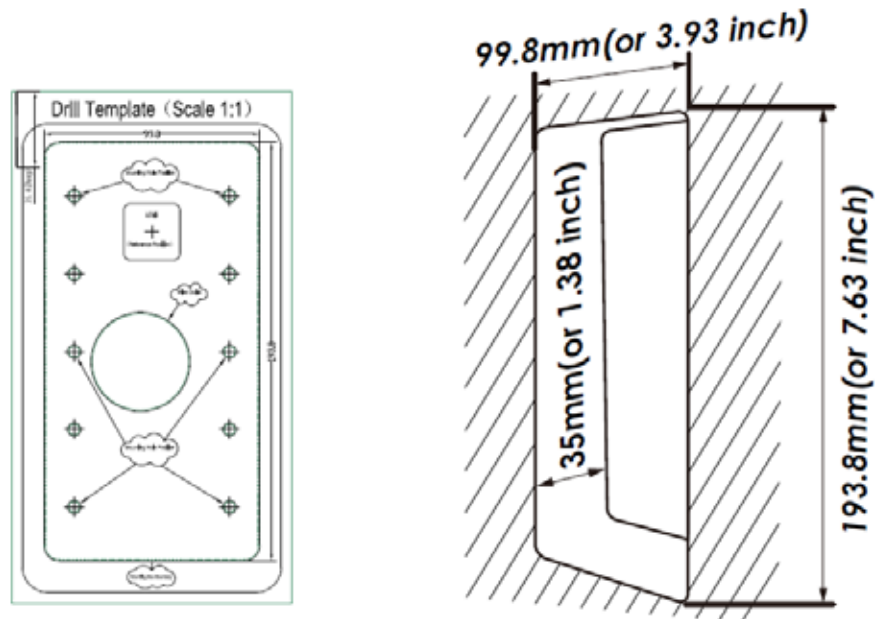
## IN-WALL MOUNTING KIT

### Solid Wall Installation

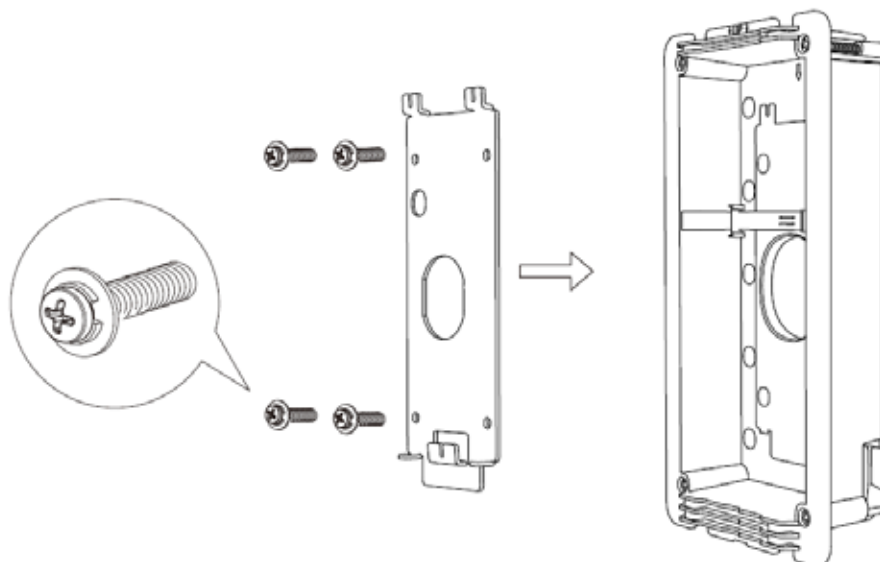
Please follow below steps to install the device into solid wall.

**Step 1:** Use provided Drill Template to mark boundary then dig a rectangle hole into the wall (drilling or dig tools not provided).

The depth of hole is **35 mm (or 1.38 inch)**, marked in the template (rotating it to measure if necessary).



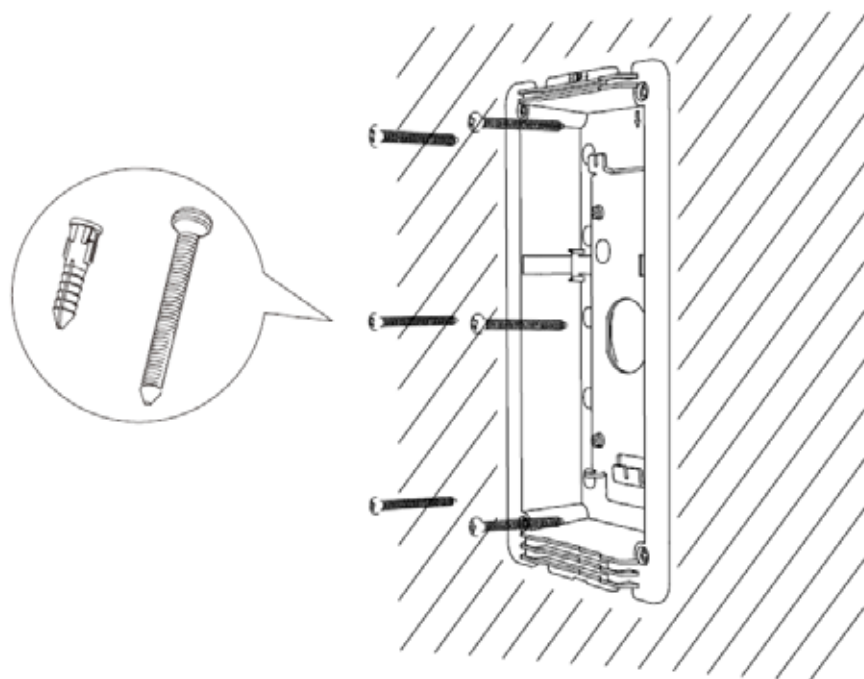
**Step 2:** Mount the Installation Bracket into the Plastic Box using supplied Screws<sup>(2)</sup>.



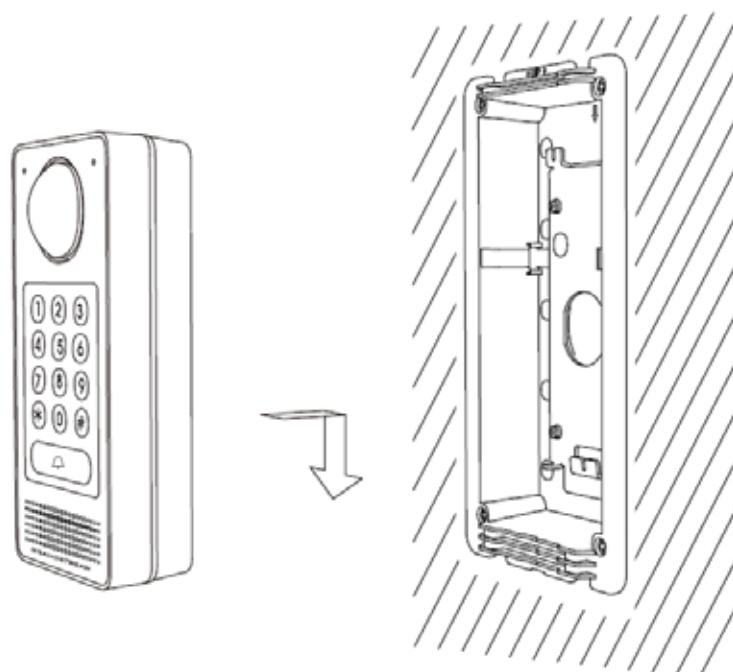


## IN-WALL MOUNTING KIT

**Step 3:** Use provided Anchor/Screws<sup>(1)</sup> to mount the Plastic Box inside the hole in the wall.



**Step 4:** Follow GDS Door Phone and User Manual to connect wires to the PoE switch or PoE Injector. Connect the Electrical Lock according to its document.

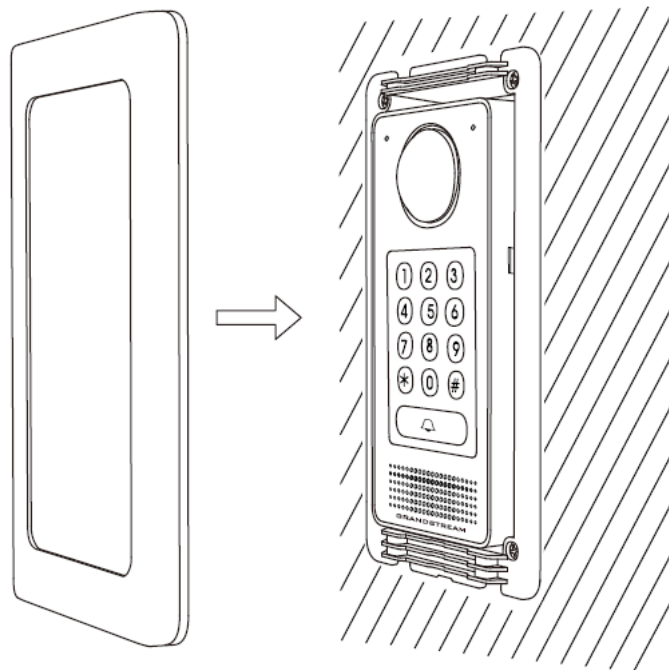




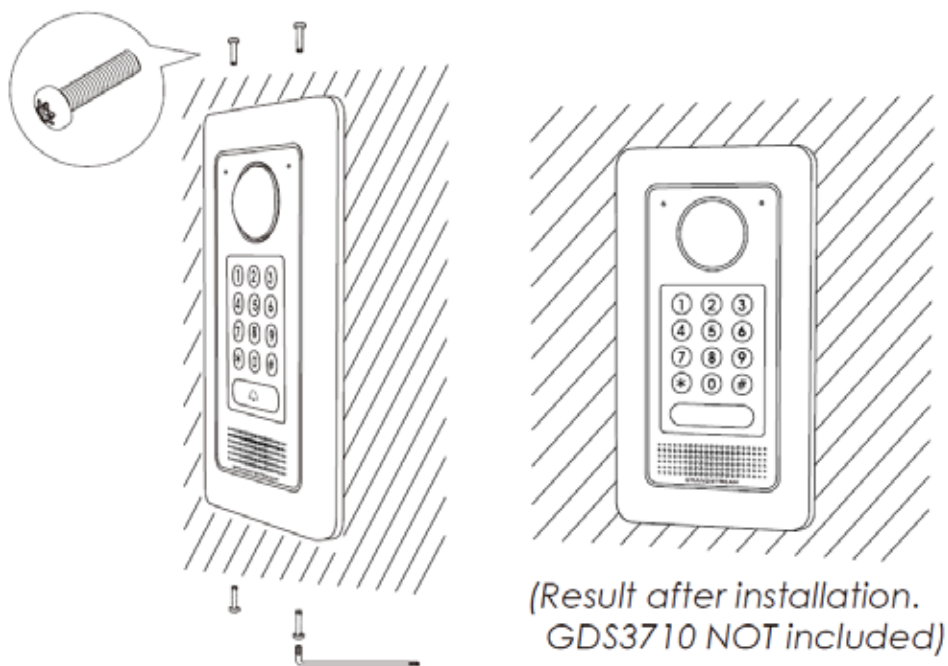


## IN-WALL MOUNTING KIT

**Step 5:** Align the bracket clips, press and push down the GDS Door Phone (i.e. shows GDS3710) into place.



**Step 6:** Install the Cover Plate and fix it using the Hex Key with the Anti-Tamper Screws<sup>(5)</sup> provided.



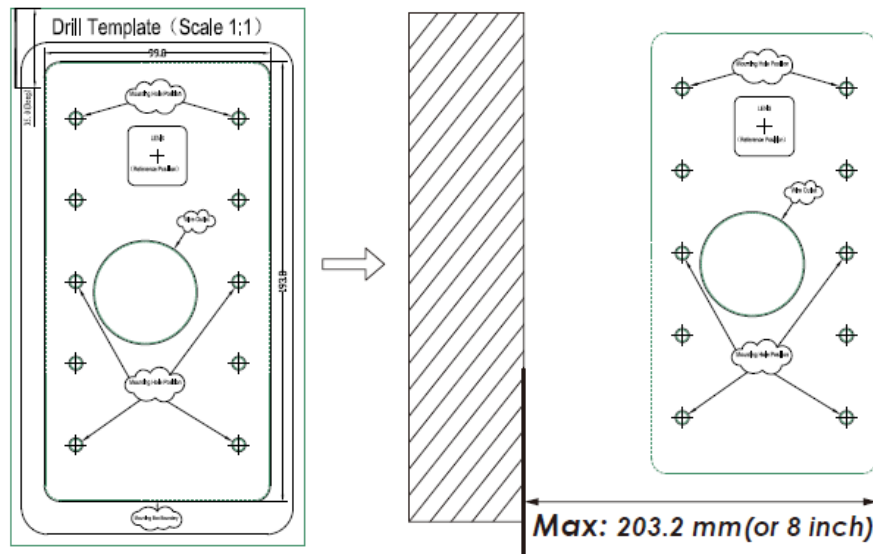


## IN-WALL MOUNTING KIT

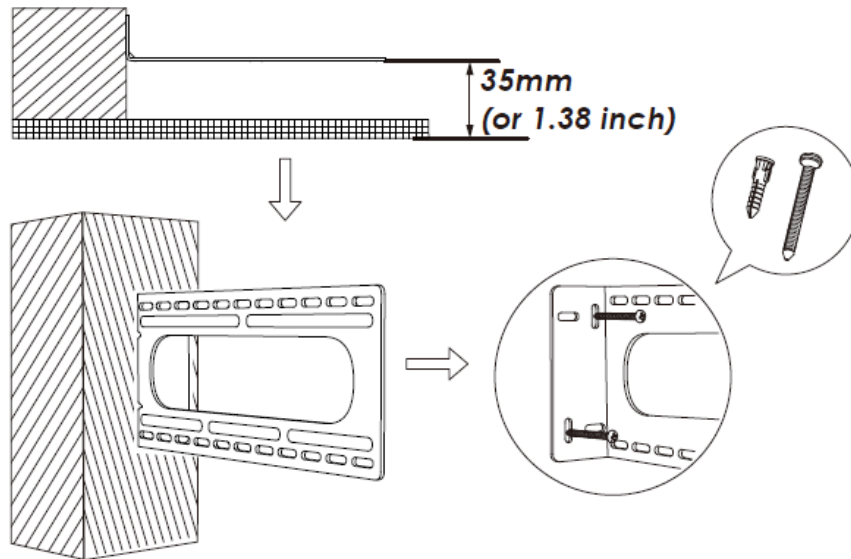
### Stud Installation

Please follow below steps to install the device at the stud of a new building open wall, or a finished wall.

**Step 1:** For finished wall, use provided Drill Template to mark boundary and dig a rectangle hole into the wall. For open wall, skip and go to next step.



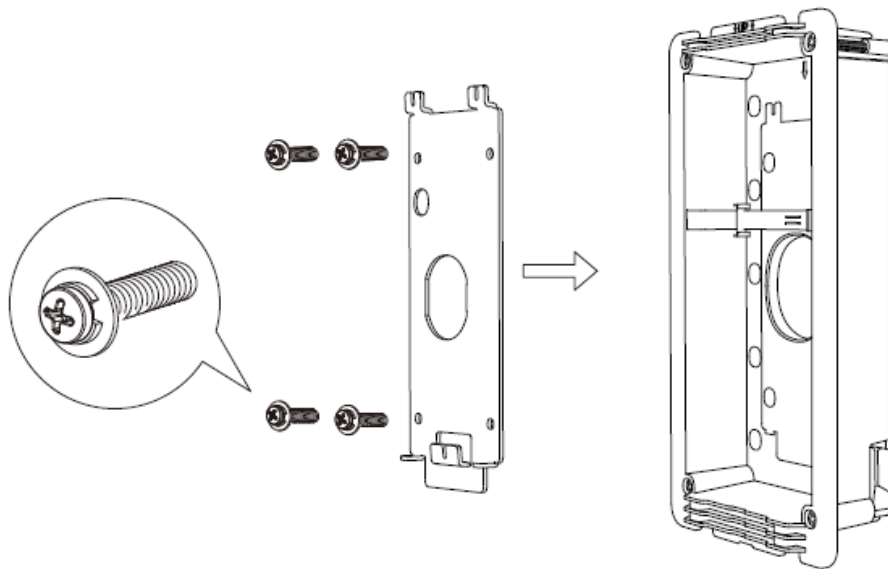
**Step 2:** Install the Metal Frame with short edge to the stud using the set of Anchor/Screws<sup>(1)</sup> provided.



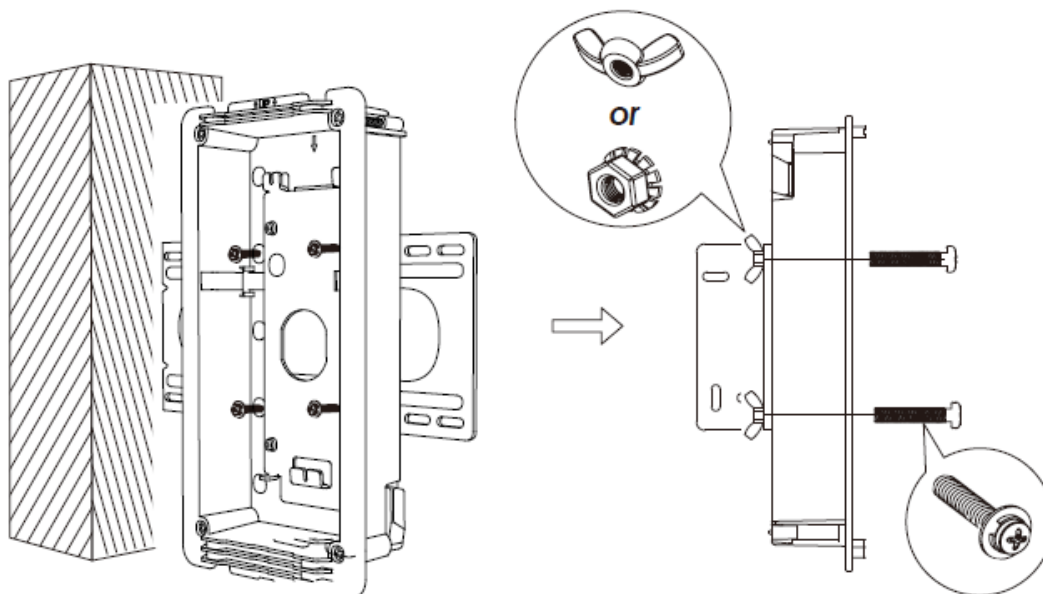


## IN-WALL MOUNTING KIT

**Step 3:** Mount the Installation Bracket into the Plastic Box using supplied Screws<sup>(2)</sup>.



**Step 4:** Use provided Screws and Nuts<sup>(3) (4)</sup> to install the Plastic Box on the long edge of the Metal Frame. Choose either set of Nuts<sup>(4)</sup> with convenience.

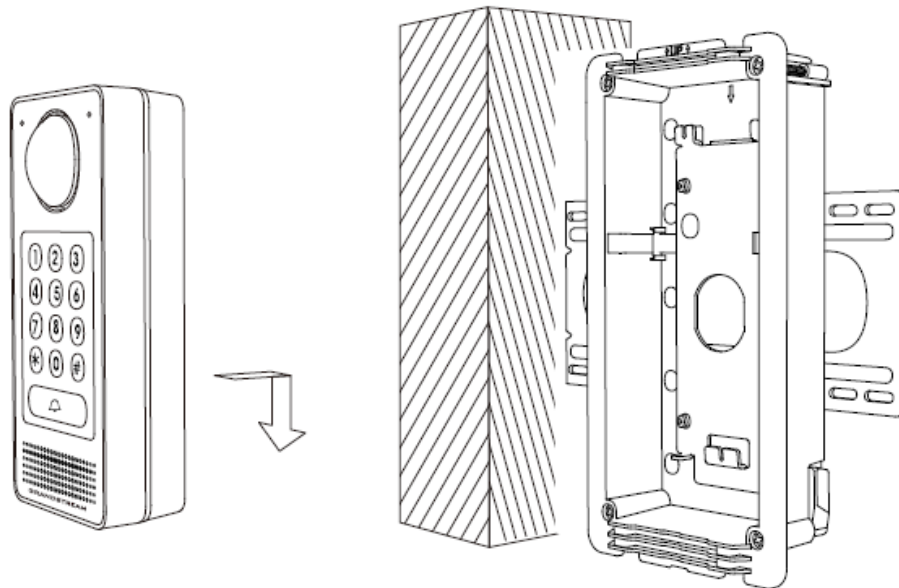




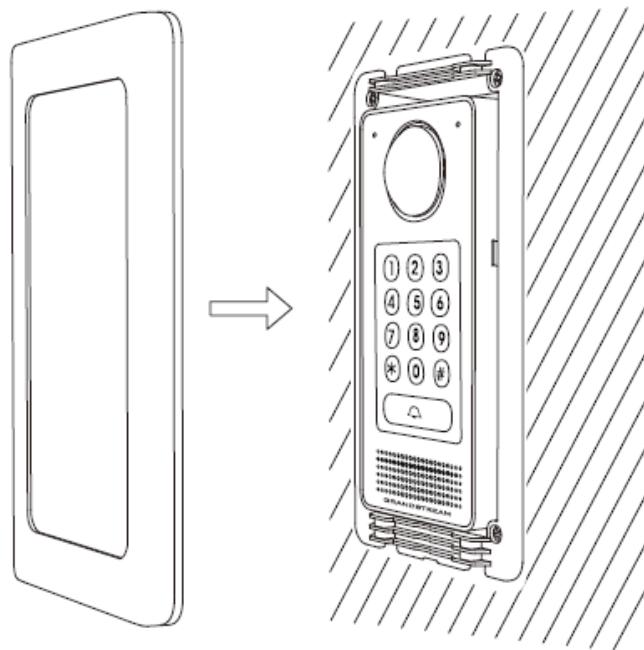


## IN-WALL MOUNTING KIT

**Step 5:** Follow GDS Door Phone and User Manual to connect wires to the PoE switch or PoE Injector. Connect the Electrical Lock according to its document.



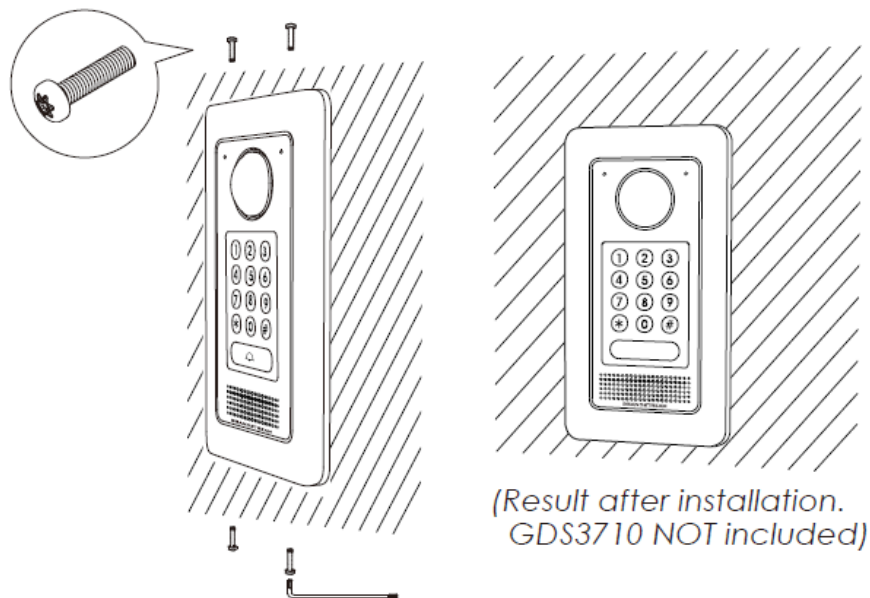
**Step 6:** Align the bracket clips, press and push down the GDS Door Phone (i.e. shows GDS3710) into place.





## IN-WALL MOUNTING KIT

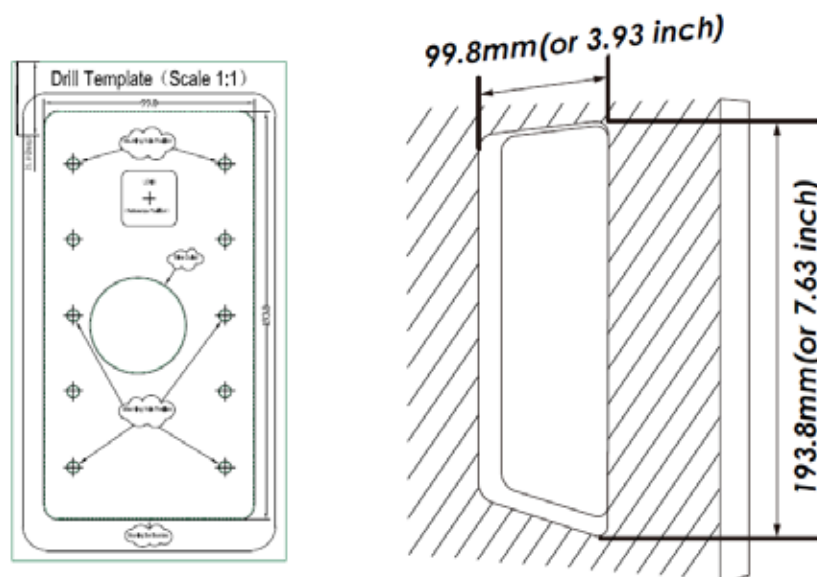
**Step 7:** Install the Cover Plate and fix it using the Hex Key with the Anti-Tamper Screws<sup>(5)</sup> provided.



### Drywall (Hollow Wall) Installation

Please follow below steps to install the device on a drywall or hollow wall. The thickness of the wall where the clamps can handle is among **6.2 ~ 24 mm (or 0.24 ~ 0.94 inch)**

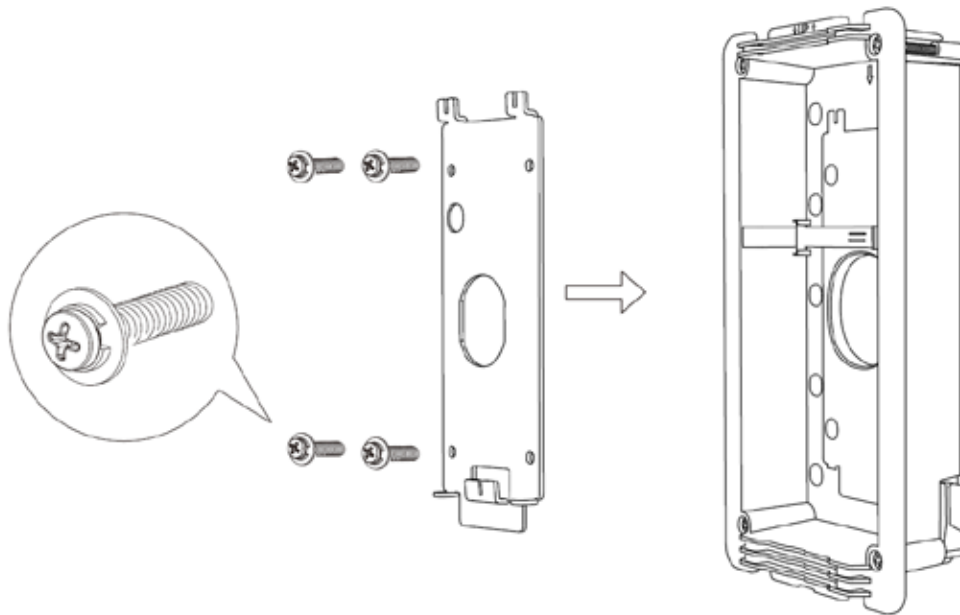
**Step 1:** Use provided Drill Template to mark boundary then cut opening on the dry wall. **Do NOT over cut.**  
(Wall cutting tools not provided)



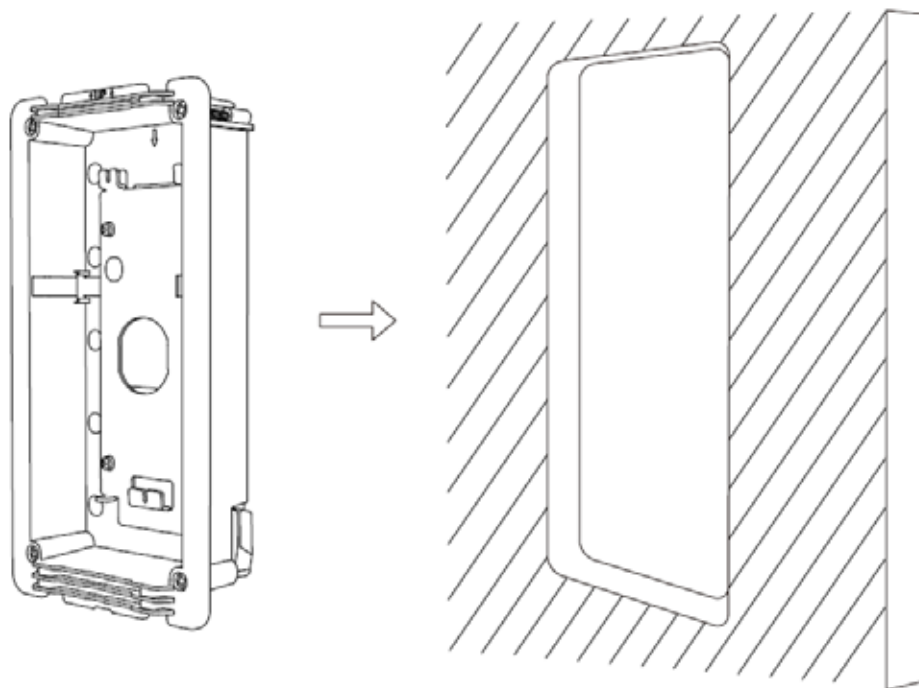


## IN-WALL MOUNTING KIT

**Step 2:** Mount the Installation Bracket into the Plastic Box using supplied Screws<sup>(2)</sup>.



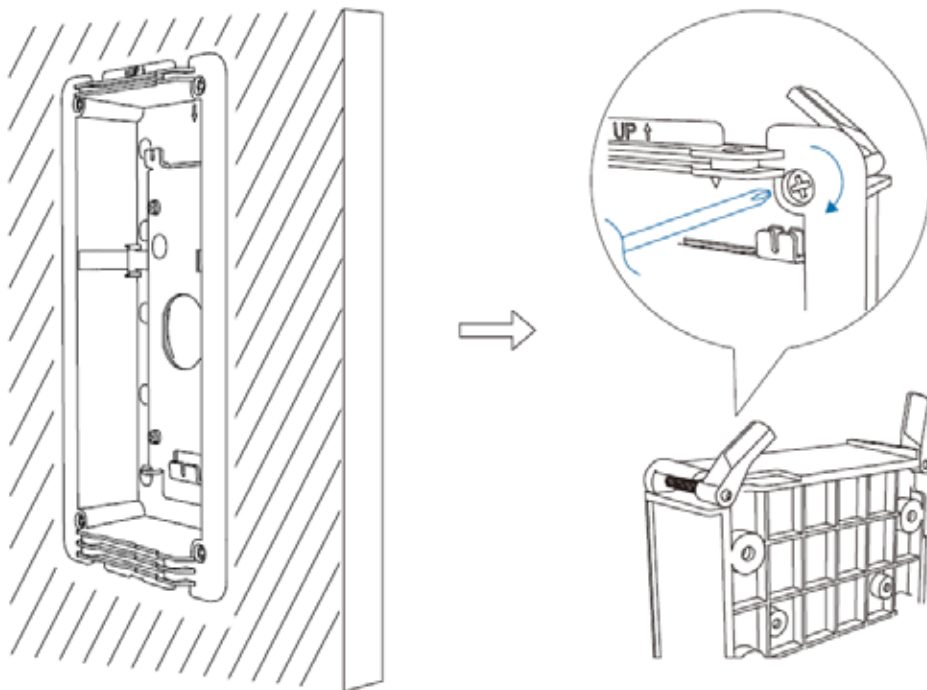
**Step 3:** Insert the Plastic Box into the cut hole properly.



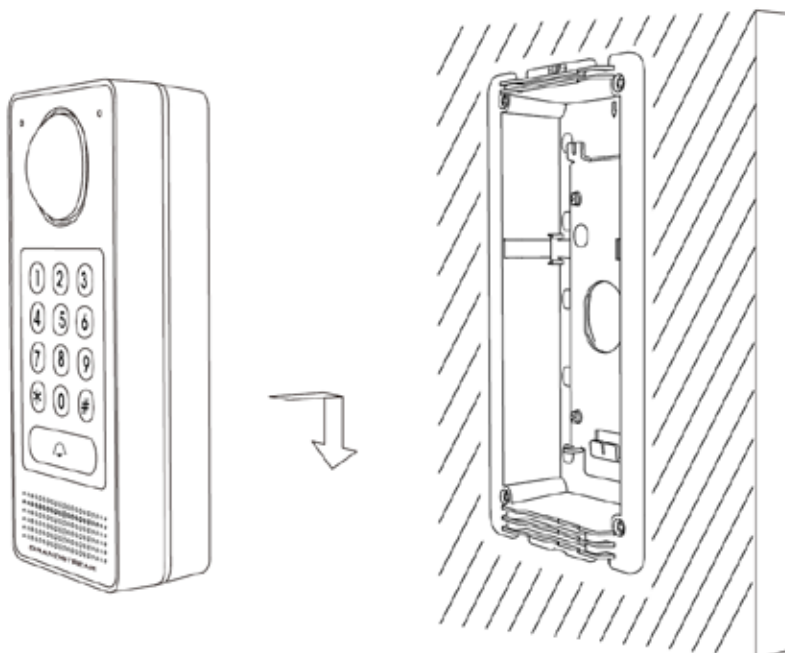


## IN-WALL MOUNTING KIT

**Step 4:** Tighten the four clamps alternately in diagonal to mount the Plastic Box on the wall. Please do NOT over tighten to avoid damaging the wall or clamp.



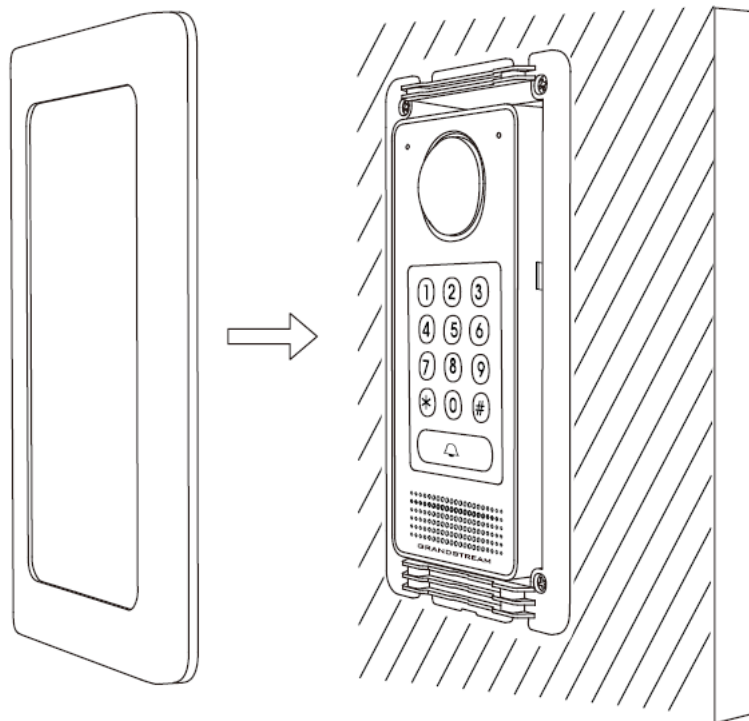
**Step 5:** Follow GDS Door Phone QIG and User Manual to connect wires to the PoE switch or PoE Injector. Connect the Electrical Lock according to its document.





## IN-WALL MOUNTING KIT

**Step 6:** Align the bracket clips, press and push down the GDS Door Phone (i.e. shows GDS3710) into place.



**Step 7:** Install the Cover Plate and fix it using the Hex Key with the Anti-Tamper Screws<sup>(5)</sup> provided.

