

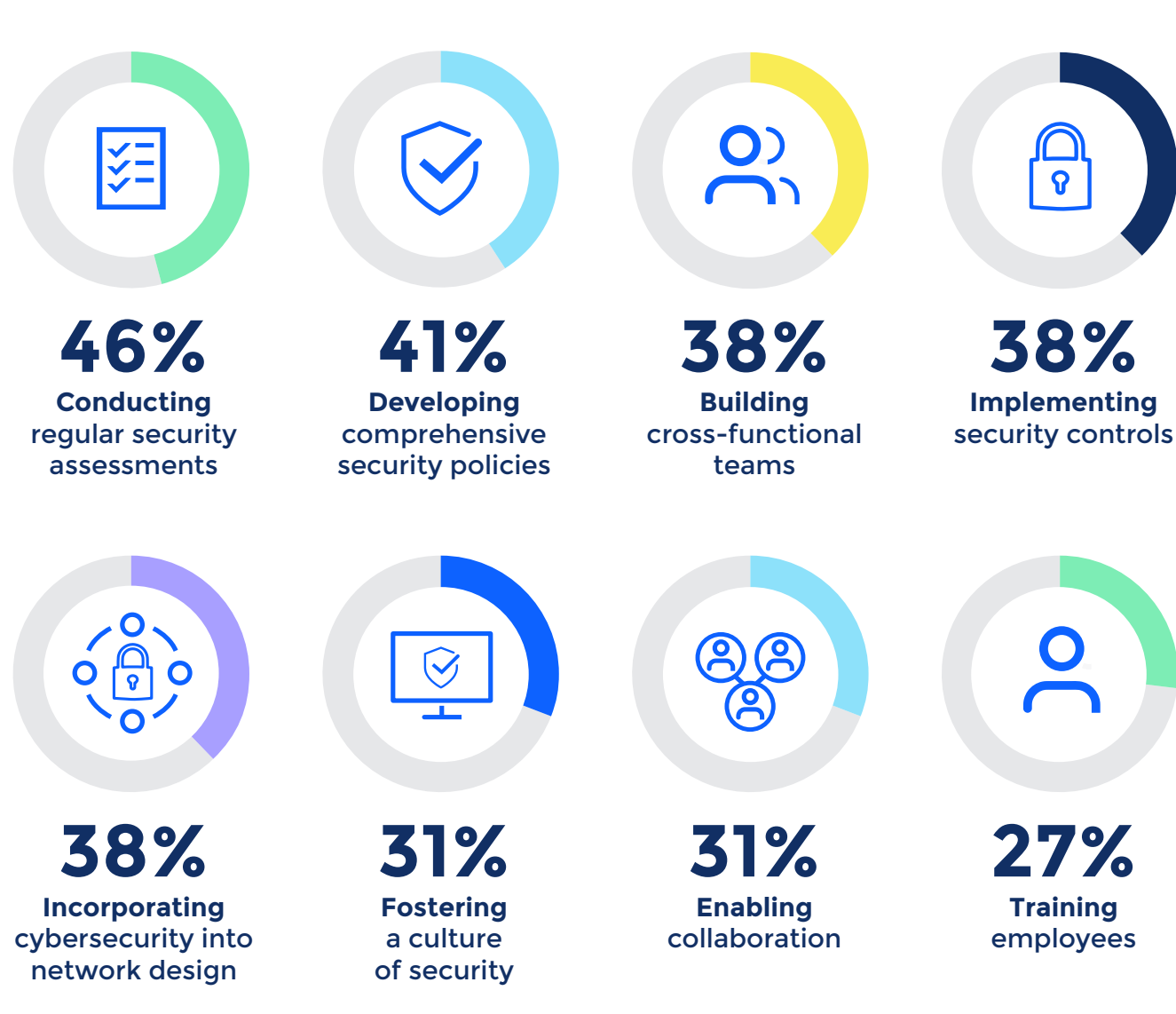
In Pursuit of Convergence and Operational Relief, IT Leaders Turn to SASE

Organizations must converge their network and security to keep pace with evolving threats and relieve overstressed IT teams. New research from CIO and Comcast Business provides insights into what's driving secure access service edge (SASE) adoption and how IT leaders are navigating implementation.

According to the study, SASE delivers on security promises while exceeding expectations in terms of operational efficiency, user experience, and remote work connectivity – critical benefits for IT teams hampered by talent shortages and the persistence of remote work.

Progress of Networking and Cybersecurity Convergence: Process and Team Structures

Organizations have begun to converge network and security, but the journey will take some time.

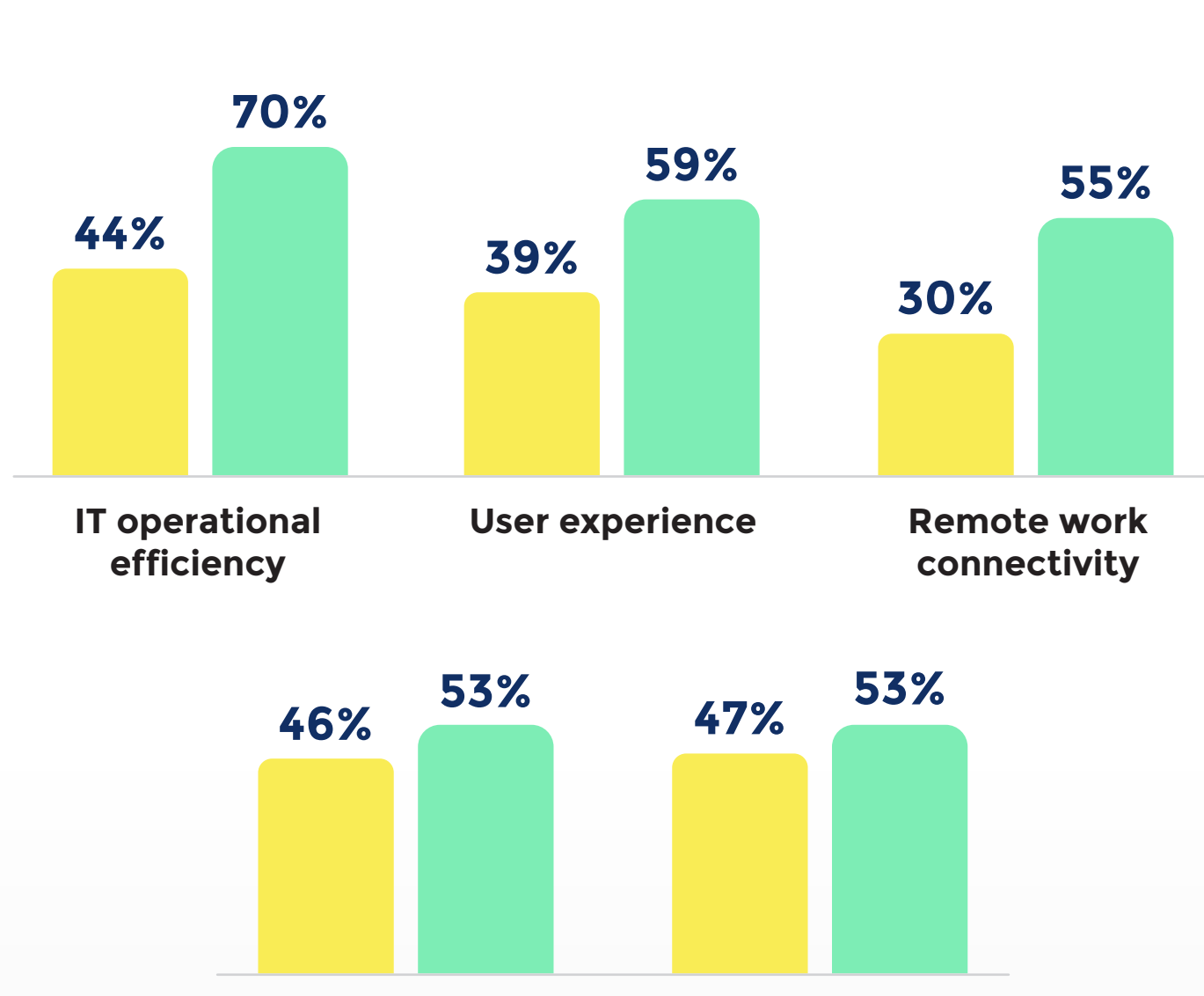


94% of companies say that security convergence is extremely or very important.



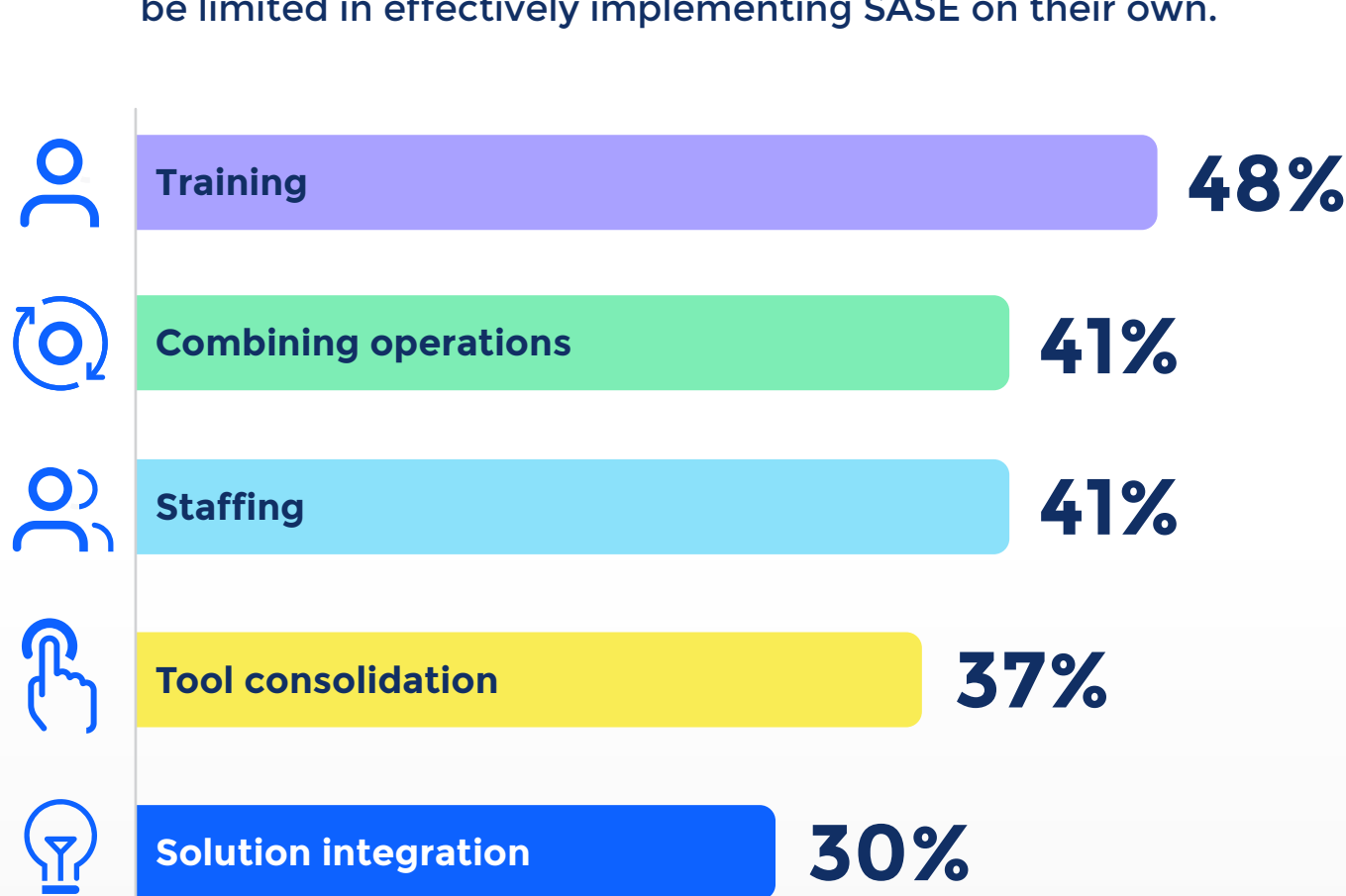
Anticipated vs. Realized SASE Benefits

SASE offers an accelerated path forward – and organizations increasingly know it. Adoption used to be driven largely by improved security performance. But according to the new study, SASE is also exceeding expectations in several business-critical areas related to the network.



Biggest Barriers to SASE Adoption

Despite these benefits, IT leaders recognize that they may be limited in effectively implementing SASE on their own.



The Unparalleled Value of Managed Service Providers



78% of organizations partner with a managed service provider for SASE implementation.

Find out about global secure networking from Comcast Business, including solutions that meet the key tenets of the SASE model.

[Learn More](#)